

Second Display Installation Guide



Point-of-Sale Hardware System

1. Accessory



VGA Cable



Serial Cable



Warranty Card



Drivers Bank

The following drivers in the folders of Driver Bank are necessary for driver installation. Make sure you choose the correct driver folder according to the MB(B55 or B75) you use.

Folder	Driver	Function
Common	Acrobat	Acrobat Reader Installation
	BIOS Tool	BIOS Update Tool
	CDROMDrv	CDROM driver installation (for DOS)
	Elo_Touch	Touch screen driver Installation
	LAN_drive	LAN driver installation
	* Netmos	Enable COM5/COM6
	Smart Card	Smart Card driver installation
B55	Audio	Audio driver Installation
	UDMA	UDMA driver installation
	VGA	VGA driver installation
B75	Audio	Audio driver installation
	Linux	Linux driver installation
	VGA_Win2KXP	VGA driver installation in Win2KXP
	VGA_Win98ME	VGA driver installation in Win98ME
Test Utility	Card Reader	Card Reader Test Program
	Cash Drawer	Cash Drawer Test Program
	VFD	Customer Display Test Program

When using B55 Mainboard, the Touch Screen was set on COM5. The Netmos driver must be loaded to enable COM5 & COM6 before installing ELO touch driver to COM5.

2. O Function

2.1 I/O Connection

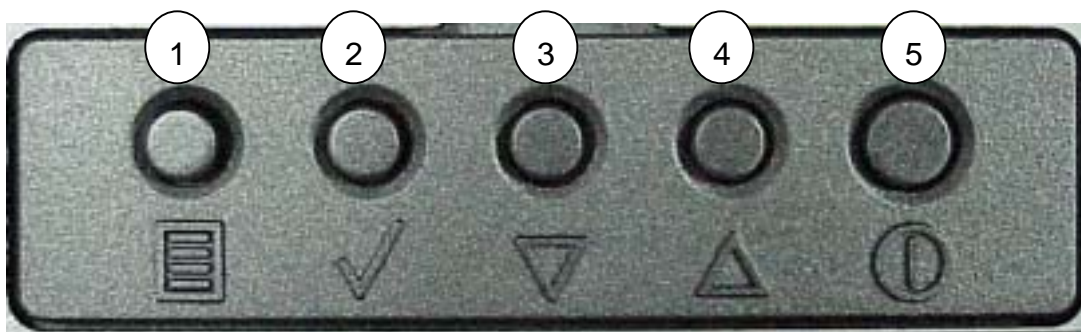
These I/O connectors are located at the junction of the Display panel and supporter.



#	Function	Description
1	COM	For Touch Screen connection (reserved for future models).
2	VGA	For Display interface connection, support +12V/2A DC from pin 4& 11, when mount with POS system.
3	DC Input	For power Input connection (reserved for the Display stands alone use).

2.2 OSD Control Buttons

Control buttons of hidden OSD are located at the back of the second display. The cover is to avoid customer changing the display setting.



#	Function	Description
1	Menu	Starts the On-Screen-Display.
2	Tick	Marks the item you select.
3	Down	Moves the selection downwards
4	Up	Moves the selection upwards.
5	Power	Turns the power of the Second Display on or off.

3. Specification

Part Number	P0750600	P0750500	P0750400
Dimension	12.1 inch	10.4 inch	8.4 inch
Resolution	800 x 600	800 x 600	800 x 600
Brightness	180 cd/m ²	150 cd/m ²	150 cd/m ²
View Area	246 x 185mm	211 x 158mm	170 x 128mm
Color	6 bit x 3 RGB (262,144)		
Interface Signal	D-SUB 15 pin female Analog RGB, Scan frequency V:60~75Hz, 800 x 600, 640 x 480		
Tempered Glass	Thickness: 2mm. Hardness 6~7 H. Light Transmittance: 88%		
Touch Screen(Optional)	To replace tempered glass with 5-wire resistive touch screen Serial port D-SUB 9 pin female		
OSD Control Button	Power, Menu, Up, Down & Enter		
Power Status LED	Two-tone LED, green for active status and orange for suspend		
DC Power Input	+12V/2A supply from VGA Connector D-SUB 15 pin 4 &11		
Pole Height	137 or 167 mm for POS500 series 155 or 185 mm for POS600 series		
Tilt Angle	0 ~ 40 degree		
Spill Proof	Screen and Bezel		
Operation Temperature	0 ~ 40		
Operation Humidity	8% ~ 90%, non-condensing		
Storage Temperature	-20 ~ 60		
Storage Humidity	5% ~ 95%, non-condensing		
Back-Light Life	20,000 hours		
System MTBF	40,000 hours		
Safety and EMI	FCC, CE		
Accessory	D-SUB 15-pin female-to-male VGA cable of 300mm long		

Note:

- a. The second display can only be mounted on POS500/505/600/605 of our product.
- b. Windows 2000 does not support the driver of the dual display.

4. Install the Second Display on POS600

a. Get the VGA cable through the supporter of the second display.



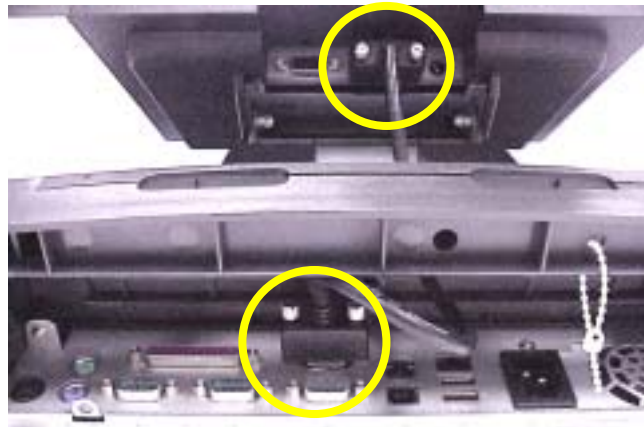
b. Insert the male head of the VGA cable into the VGA port.



c. Mount the second display on the rear of the system and tighten the three screws on the supporter (The third one is behind the supporting pole).



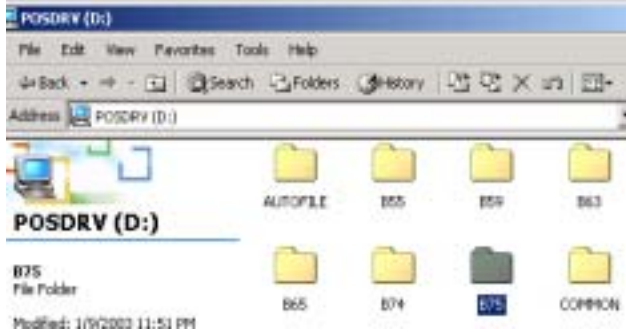
d. Insert the other end of the VGA cable (female) into the VGA port of the system to establish the connection.



5. Driver Installation

The following procedures are for POS600 with B75 M/B under Windows 2000. Other platforms are similar.

5.1 VGA



a. Click "B75" on the POS driver window.



b. Click "VGA_Win2KXP" on the B75 window.



c. Click "SETUP" On the VGA_Win2KXP window.



d. Click "Next" on the Welcome window.



e. Click "Next" on the Setup Type window.



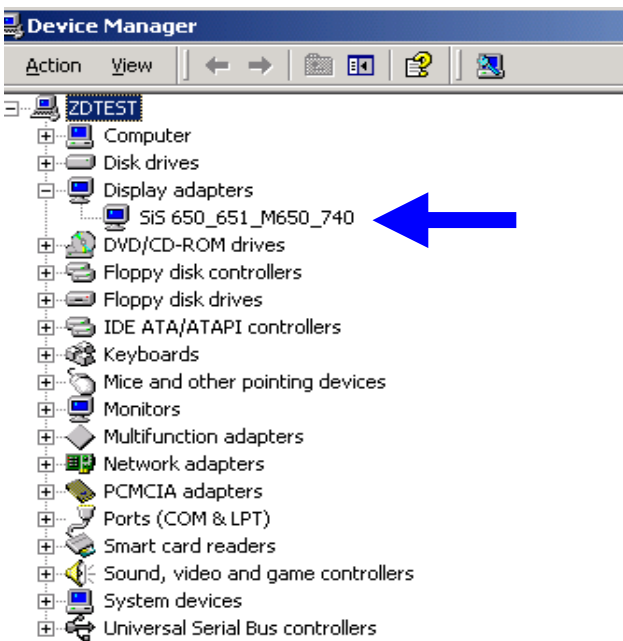
f. Click "Next" on the Select Program Folder window..



g. Click "Next" on the Select Copying Files window.



h. Click "Finish" on the Setup Complete window.

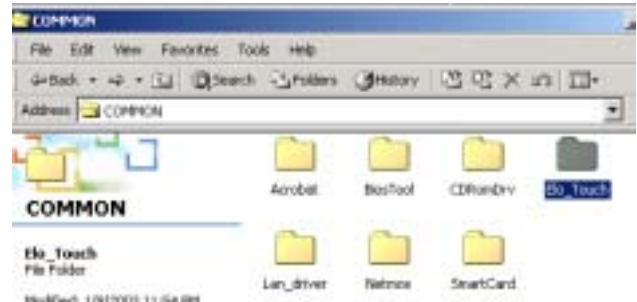


i. Now the VGA driver is installed.

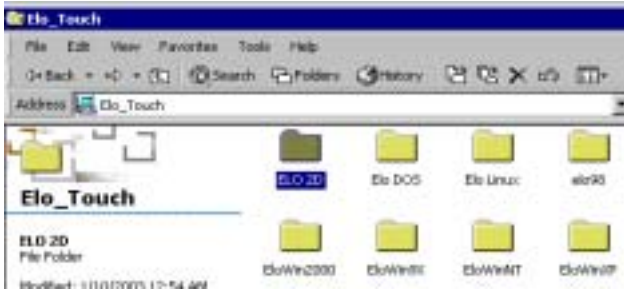
5.2 Elo_Touch



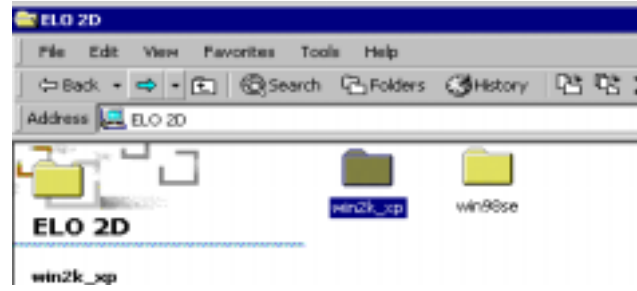
a. Click "COMMON" on the POS driver window.



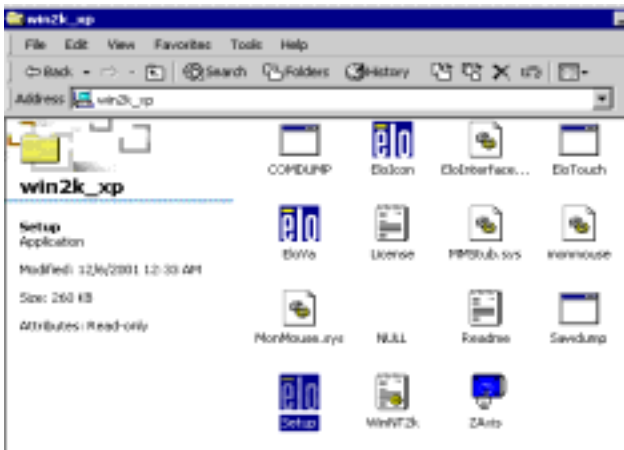
b. Click "Elo_Touch" on the COMMON window.



c. Click "ELO 2D" on the Elo_Touch window.



d. Click "win2K_xp" on the ELO 2D window.



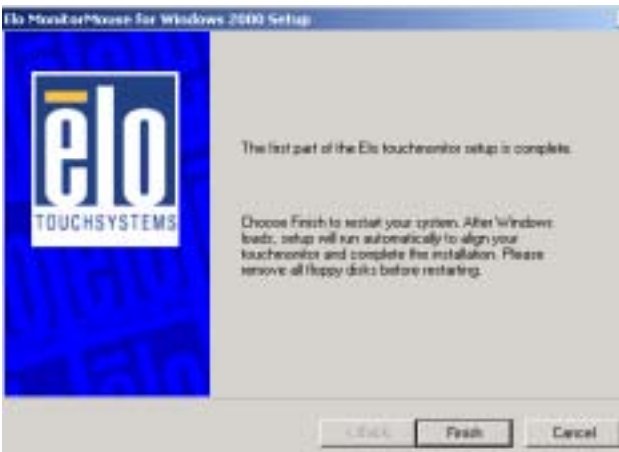
e. Click "Setup" on the win2K_xp window.



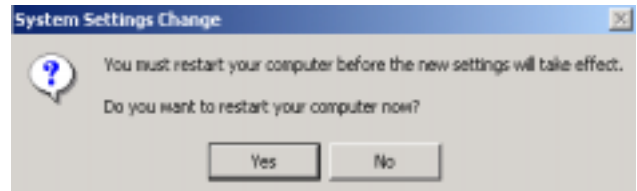
f. Click "Next" on the Elo MonitorMouse for Windows 2000 Setup window.



g. This is the key part of the whole installation: usually there can only be one COM port chosen for touch screen function(it's COM5 for POS500/505/600/605), but if the system is connected to a second display, you can choose any of COM1, COM2, COM3 for the second display touch screen function by pressing the control button on the keyboard while making your selection(it's COM1 in this case). Proceed the installation with clicking "Next."



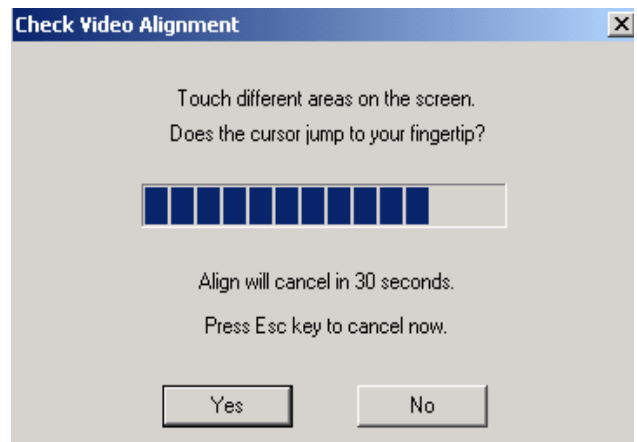
h. Click "Finish" on the Elo MonitorMouse for Windows 2000 Setup window.



i. Click "Yes" on the System Settings Change.



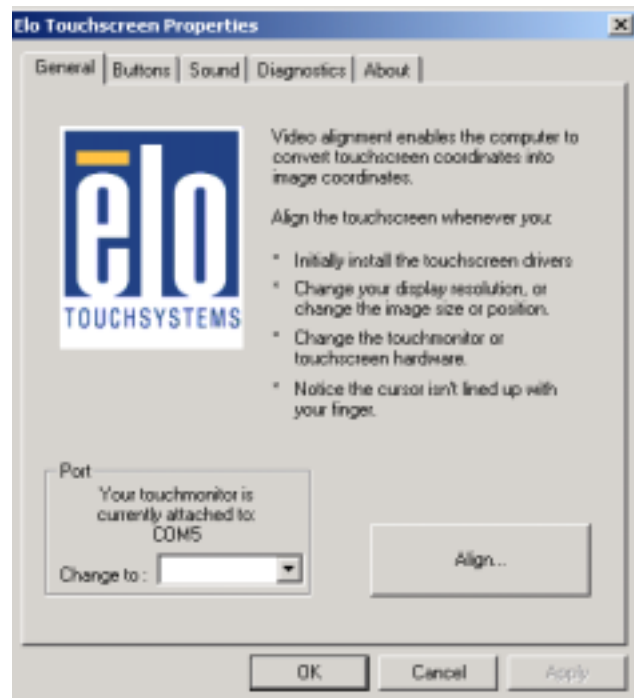
j. After the computer restarted, touch the targets with your finger for alignment.



k. Click "Yes" on the Check Video Alignment window.



l. Click “Finish” on the “Elo TouchSystem Setup window.



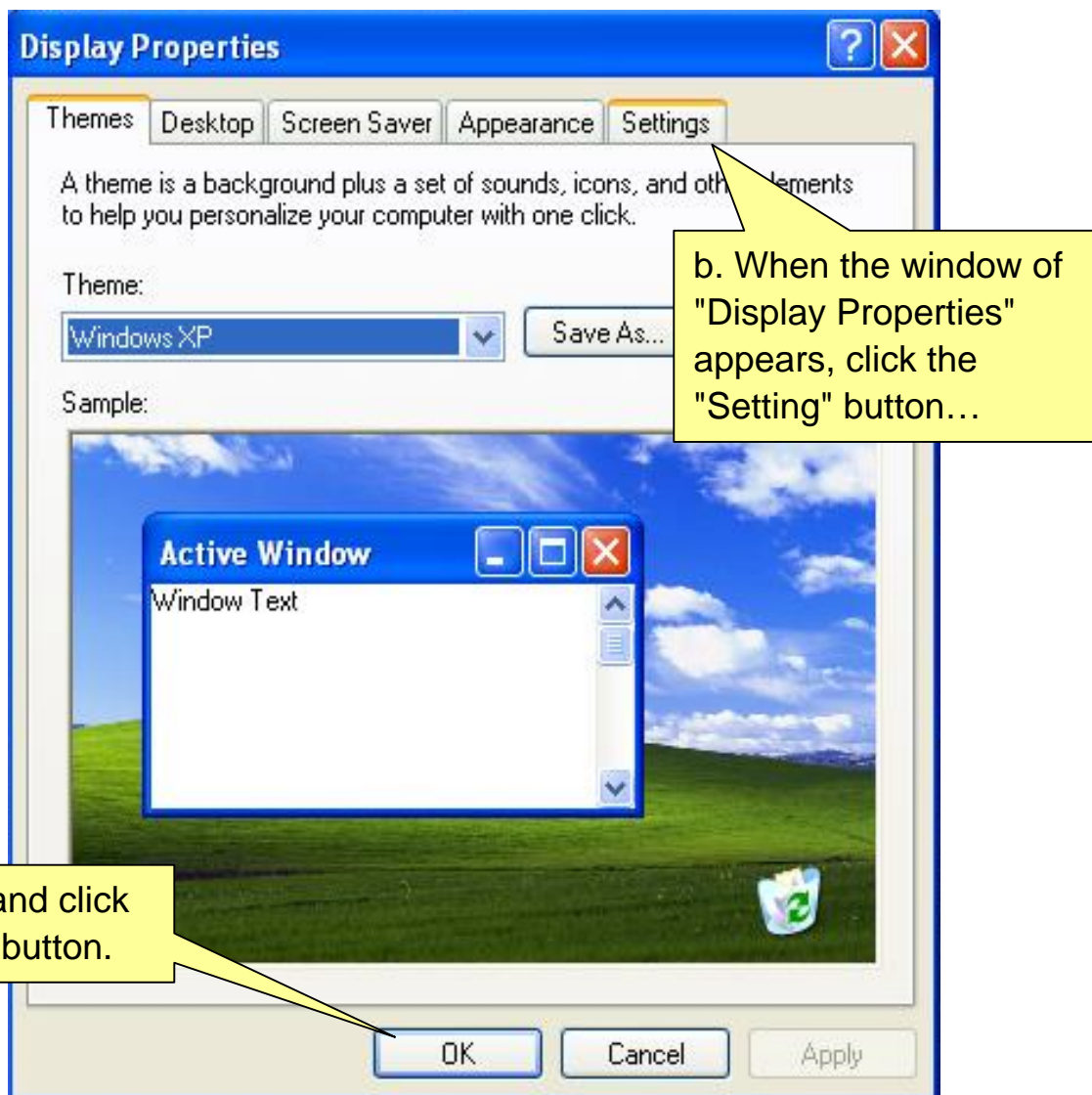
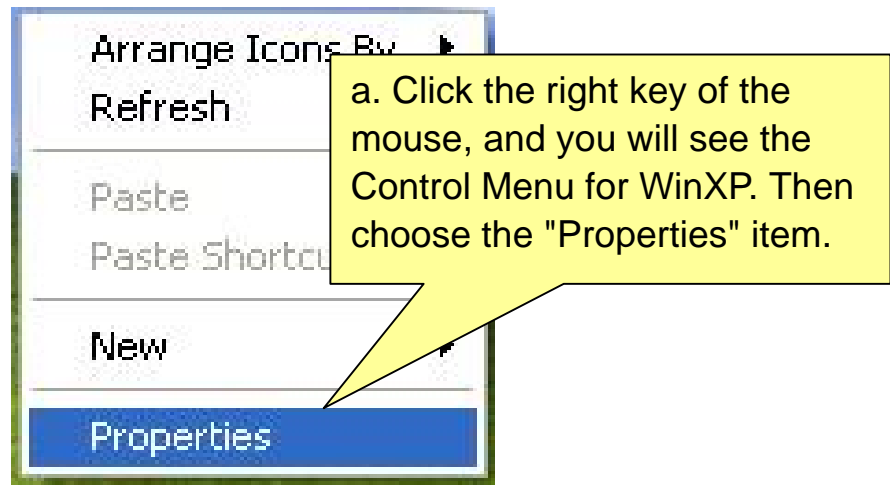
m. If the cursor is not in sync with your finger tip, click “Align...” to execute the alignment procedure again, or click “OK”

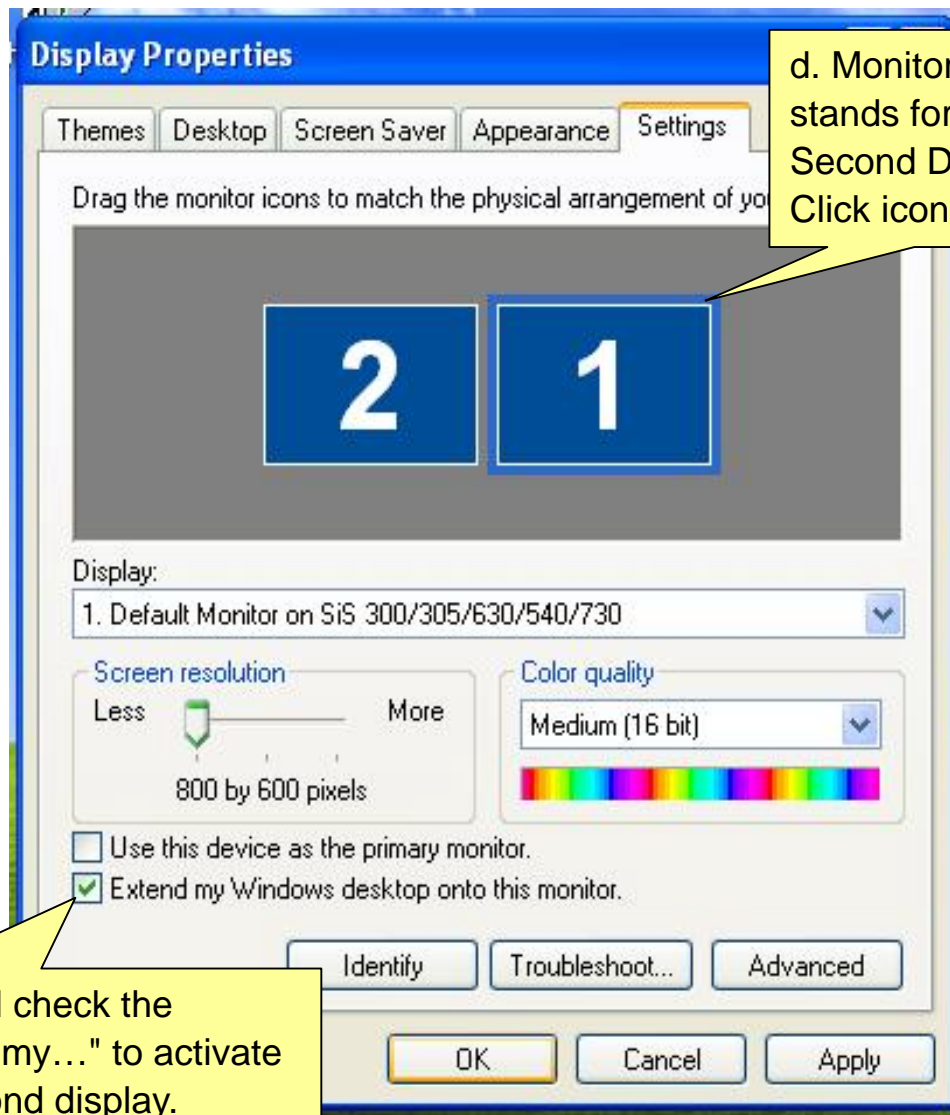


n. Now the Elo_Touch driver is installed.

5.3 Dual Display Setting (Windows XP)

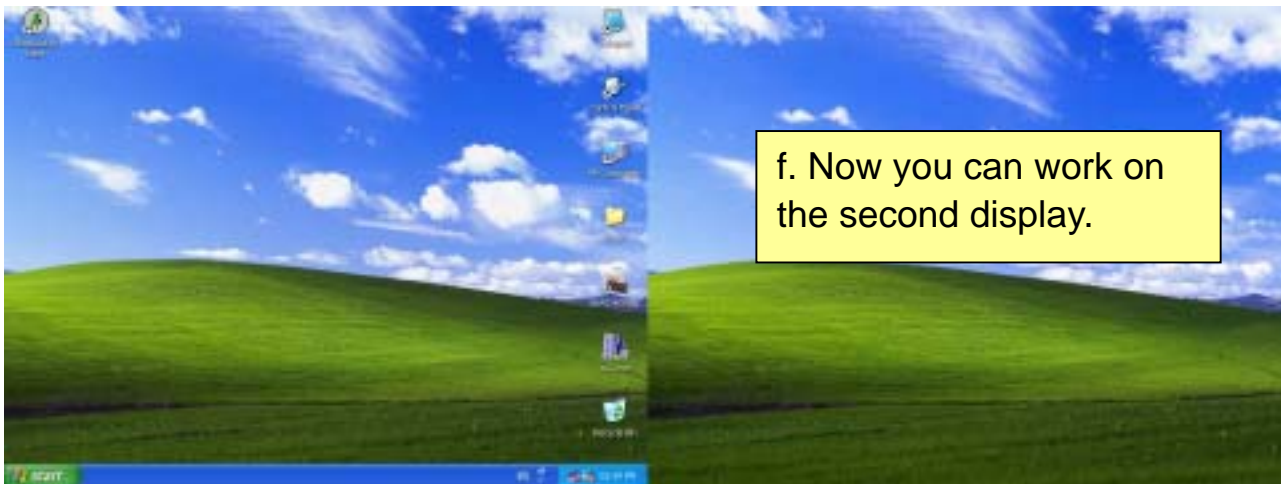
Please note that Windows 2000 does not support dual display function. Windows XP and Windows 98 do.





d. Monitor 1 stands for the Second Display. Click icon "1"...

e. ...and check the "Extend my..." to activate the second display.



f. Now you can work on the second display.

6. On-Screen Display

OSD MENU V1.1				
I-TOUCH	(automatically adjust clock, phase, brightness, contrast, load default)			
CONTRAST	(contrast adjustment)			
BRIGHTNESS	(brightness adjustment)			
SHARPNESS	1	2	3	OFF
OSD POSITION (OSD centering adjustment)	H (horizontal)	V (vertical)	T (transparency)	RECALL VALUE (return to default setting)
LANGUAGE	ENGLISH (default)			
	FRENCH			
	SPANISH			
	GERMAN			
	CHINESE			
	JAPANESE			
H/V-POSITON (LCD centering adjustment)	H (horizontal)		V (vertical)	
ADVANCED SET (picture performance adjustment)	RGB COLOR (color ratio adjustment)		R (red)	
			G (green)	
			B (blue)	
	PHASE (clock delayed time)			
	CLOCK (pixel frequency)			
	COLOR LEVEL (black and white portion adjustment)		W (white)	
			B (black)	

- a. Press "Menu" button to make adjustments, then press "Menu" button to exit menu, then press "Menu" button to close OSD window and save the adjustments. If you do not use or change any value of the control function, the OSD will disappear in 16 seconds.
- b. While the display is capable of other resolutions (as with all flat panel displays), it is a fixed matrix of pixels and best used at its native resolution – 800 x 600.